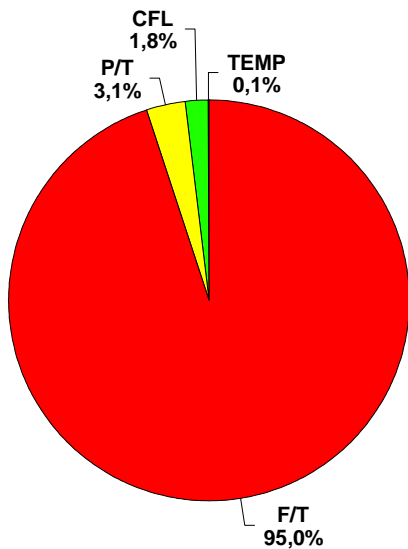


# CONFRONTO

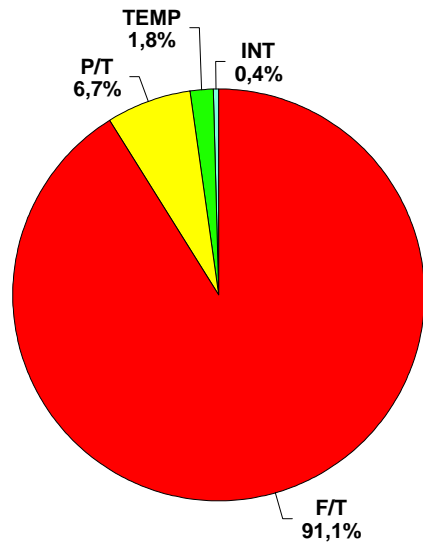
## DATI IBM 12/2003

### RISPOSTE QUESTIONARIO 05/2004

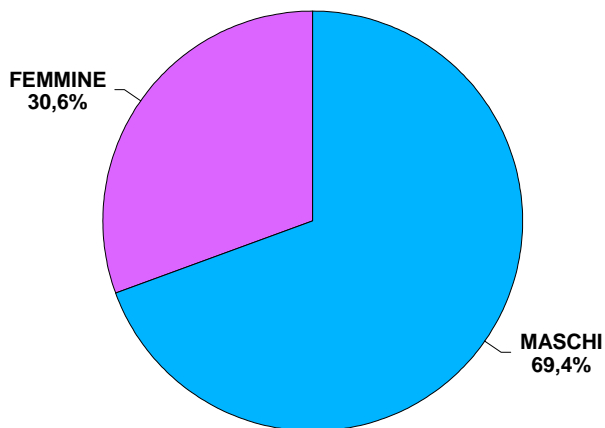
**FORZA LAVORO PER  
TIPOLOGIA CONTRATTUALE  
DATI IBM 12/2003**



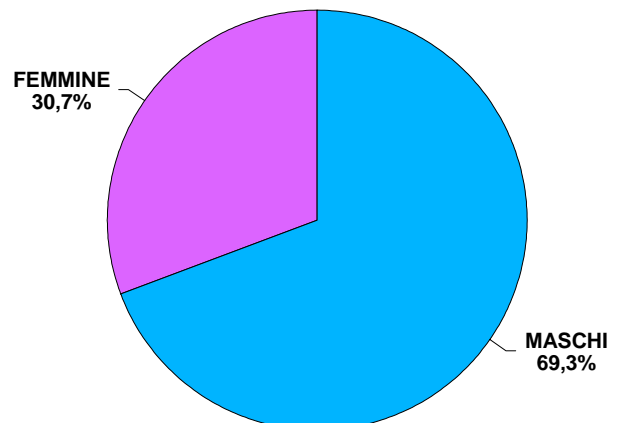
**FORZA LAVORO PER  
TIPOLOGIA CONTRATTUALE  
QUESTIONARIO 05/2004**



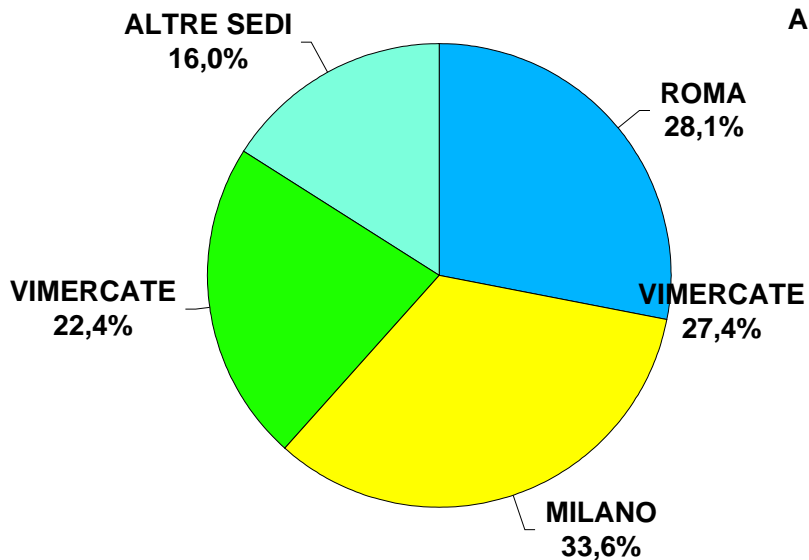
**FORZA LAVORO  
PER SESSO  
DATI IBM 12/2003**



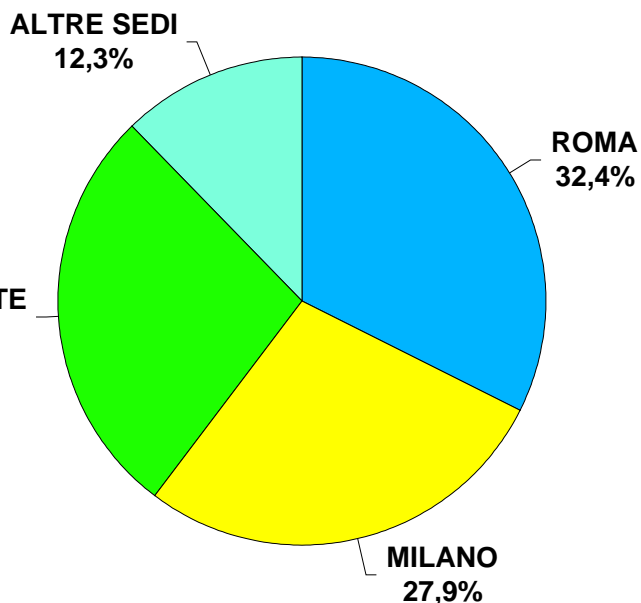
**FORZA LAVORO  
PER SESSO  
QUESTIONARIO 05/2004**



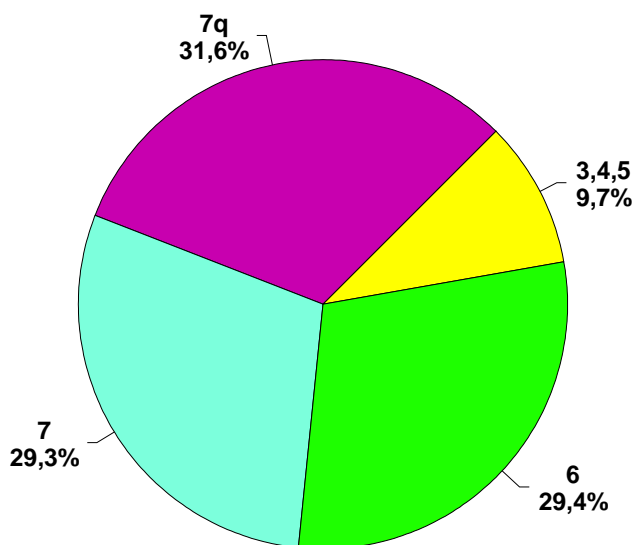
**FORZA LAVORO  
PER SEDE  
DATI IBM 12/2003**



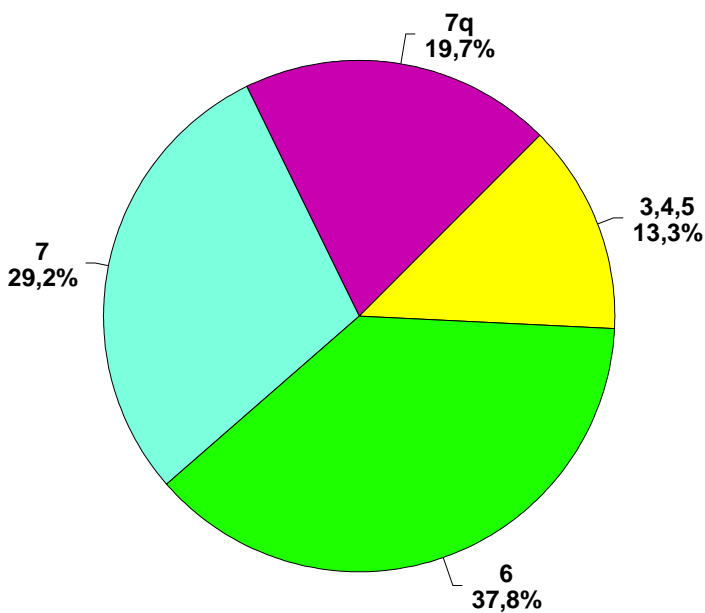
**FORZA LAVORO  
PER SEDE  
QUESTIONARIO 05/2004**



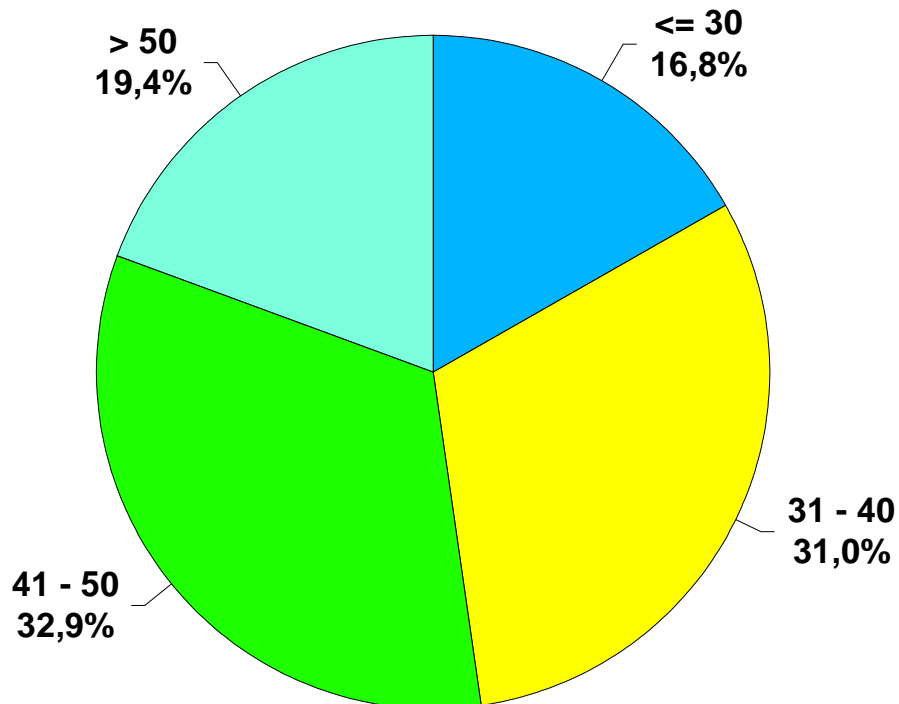
**FORZA LAVORO  
PER CATEGORIA  
DATI IBM 12/2003**



**FORZA LAVORO  
PER CATEGORIA  
QUESTIONARIO 05/2004**



CLASSI DI ETA'  
QUESTIONARIO 05/2004



**Nota bene:**

**i questionari sono stati distribuiti nelle seguenti sedi:**

- Bologna
- Cagliari
- Genova
- Napoli
- Padova
- Roma (Sciangai)
- Roma (Parco dei Medici)
- Milano (Segrate)
- Milano (via Tolmezzo)
- Torino
- Vimercate

**1673 lavoratori hanno restituito i questionari compilati**